

ESTERO

3 beds · 2 baths · 2-car garage · 1,630 sf a/c



ELEVATION D



ELEVATION F



ELEVATION S

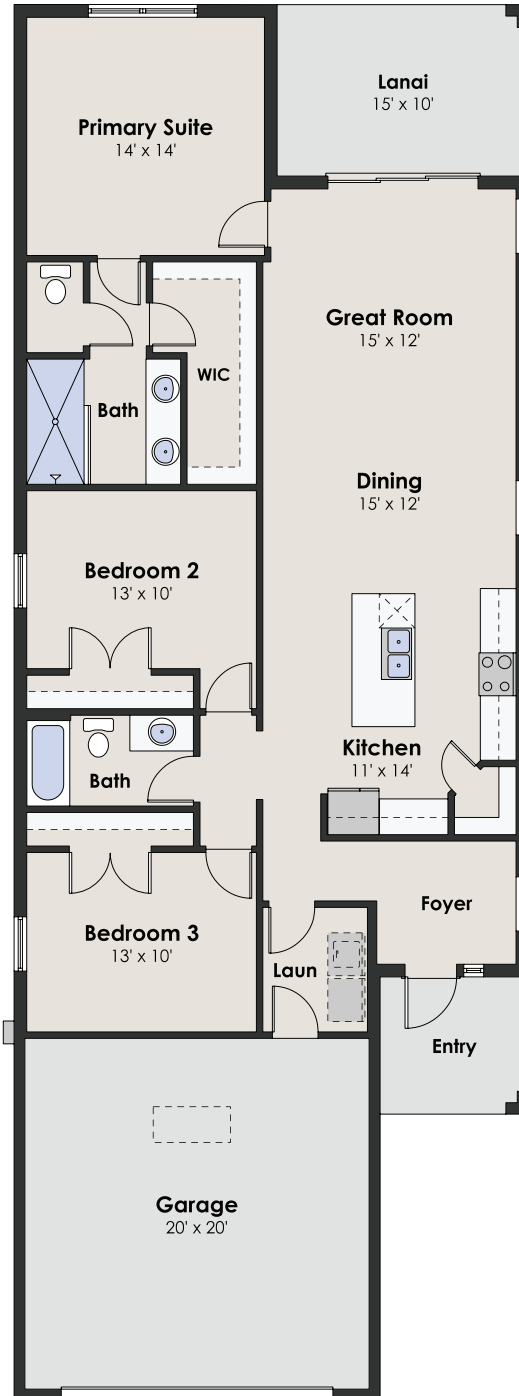


ESTERO

SQUARE FOOTAGE

living a/c	1,630
lanai	147
garage	450
entry	69
total	2,296

3 beds · 2 baths · 2-car garage · 1,630 sf a/c



Creekside  Run

855.44.MYCAH
ChristopherAlanHomes.com

 CHRISTOPHER ALAN HOMES

Features, amenities, equipment, materials, floor plans, elevations, colors, and designs vary and are subject to changes or substitution without notice. Items shown are artist's renderings and may contain options that are not standard on all models or not included in the purchase price. Availability and pricing may vary and are subject to change without notice. Square footage/acreage/dimensions are estimated; actual square footage/acreage/dimensions may differ. Garage/bay sizes may vary from home to home and may not accommodate all vehicles. Purchasers should refer to the applicable purchase and sale agreement for final terms and conditions. © Christopher Alan Homes #CGC1532837. Christopher Alan Realty LLC #CQ1055390. 06/23.



3 beds · 2 baths · 2-car garage · 1,630 sf a/c



ELEVATION D WITH STONE



ELEVATION F WITH STONE

