

AMELIA

Creekside  Run

2 beds · 2 baths · 2-car garage · 1,449 sf a/c



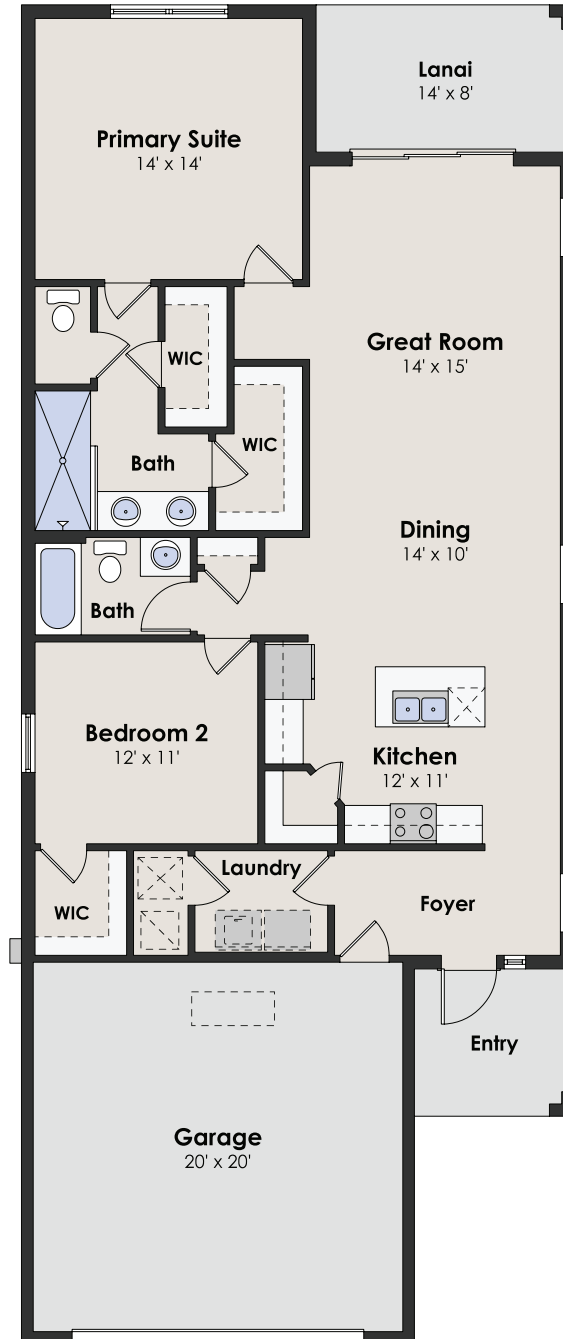
CHRISTOPHER
ALAN HOMES
DREAMS WITHIN REACH

AMELIA

SQUARE FOOTAGE

| | |
|--------------|--------------|
| living a/c | 1,449 |
| lanai | 112 |
| garage | 443 |
| entry | 69 |
| <hr/> | |
| total | 2,073 |

2 beds · 2 baths · 2-car garage · 1,449 sf a/c



AMELIA

WITH OPTIONAL STONE

Creekside  Run

2 beds · 2 baths · 2-car garage · 1,449 sf a/c



ELEVATION D WITH STONE



ELEVATION F WITH STONE



**CHRISTOPHER
ALAN HOMES**
DREAMS WITHIN REACH